

ROWAN

GUBAN

By Sarah Hatton

ZB227-00003

v.1







GUBAN

by Sarah Hatton

Craft 

Skill Level 

ZB227-00003 

v.1

SIZE

To fit bust

81-86	91-97	102-107	112-117	122-127	cm
32-34	36-38	40-42	44-46	48-50	in

Actual bust measurement of garment

94	105	114	124	134	cm
37	41½	45	49	53	in

YARN

Camello

9	10	11	12	13	x 25gm
---	----	----	----	----	--------

(photographed in Cream 001)

**More Yarn
Information**

on knitrowan.com

NEEDLES

1 pair 3¼mm (no 10) (US 3) needles

1 pair 4mm (no 8) (US 6) needles

Cable needle

TENSION

27 sts and 41 rows to 10 cm measured over st st using 4mm (US 6) needles. Cable panel (65 sts) measures 19 cm.

SPECIAL ABBREVIATIONS

C5B = slip next 3 sts onto cable needle and leave at back of work, K2, then K3 from cable needle; **C5F** = slip next 2 sts onto cable needle and leave at front of work, K3, then K2 from cable needle;

M1L = pick up loop lying between needles from the front and K into back of this loop; **M1R** = pick up loop lying between needles from the back and K into front of this loop; **wrap3** = sl 1, K1, yfwd, K1, lift slipped st over the (K1, yfwd, K1) and off right needle.

BACK

Using 3¼mm (US 3) needles cast on 143 [157: 169: 183: 197] sts.

Row 1 (RS): P5 [2: 3: 5: 2], K3, *P2, K3, rep from * to last 5 [2: 3: 5: 2] sts, P5 [2: 3: 5: 2].

Row 2: K5 [2: 3: 5: 2], P3, *K2, P3, rep from * to last 5 [2: 3: 5: 2] sts, K5 [2: 3: 5: 2].

Row 3: P5 [2: 3: 5: 2], wrap3, *P2, wrap3, rep from * to last 5 [2: 3: 5: 2] sts, P5 [2: 3: 5: 2].

Row 4: As row 2.

These 4 rows form fancy rib.

Work in fancy rib for a further 15 rows, ending with **WS** facing for next row.

Row 20 (WS): Rib 68 [75: 81: 88: 95], K2tog, P3, K2tog, rib 68 [75: 81: 88: 95]. 141 [155: 167: 181: 195] sts.

Change to 4mm (US 6) needles.

Now work in patt as folls:

Row 1 (RS): K38 [45: 51: 58: 65], work next 65 sts as row 1 of chart, K38 [45: 51: 58: 65].

Row 2: P38 [45: 51: 58: 65], work next 65 sts as row 2 of chart, P38 [45: 51: 58: 65].

These 2 rows set the sts – centre 65 sts in patt from chart with st st at each side.

Repeating the 36 row chart rep throughout and keeping sts correct as now set, cont as folls:

Cont straight until back meas 38 [38.5: 39: 39.5: 40] cm, ending with RS facing for next row.

Shape raglan armholes

Keeping patt correct, cast off 3 sts at beg of next 2 rows. 135 [149: 161: 175: 189] sts.

Next row (RS): K2, P2, wrap3, P2, K1, sl 1, K1, pssso, patt to last 12 sts, K2tog, K1, P2, wrap3, P2, K2.

Next row: P2, K2, P3, K2, P1, P2tog, patt to last 12 sts, P2tog tbl, P1, K2, P3, K2, P2.

Next row (RS): K2, P2, K3, P2, K1, sl 1, K1, pssso, patt to last 12 sts, K2tog, K1, P2, K3, P2, K2.

Next row: P2, K2, P3, K2, P1, P2tog, patt to last 12 sts, P2tog tbl, P1, K2, P3, K2, P2. 127 [141: 153: 167: 181] sts.

Last 4 rows form cable patt along raglan armhole edges and set raglan decreases.

Keeping cable patt and decreases correct as now set, dec 1 st at each end of next 3 [11: 15: 23: 29] rows, ending with **WS** facing for next row. 121 [119: 123: 121: 123] sts.

Next row (WS): P2, K2, P3, K2, P2, patt to last 11 sts, P2, K2, P3, K2, P2.

Now working all WS rows as set by last row and keeping raglan armhole edge sts correct as set, dec 1 st at each end of next and foll 27 [26: 27: 26: 26] alt rows. 65 [65: 67: 67: 69] sts.

Work 1 row, ending with RS facing for next row.

Break yarn and leave sts on a holder.

FRONT

Work as given for back until 69 [69: 73: 73: 77] sts rem in raglan armhole shaping.

Work 1 row, ending with RS facing for next row.

Shape front neck

Sizes 81-86 and 91-97 cm only

Next row (RS): K2, P2, K1, sl 1, K1, pssso and turn, leaving rem sts on a holder. 6 sts.

Work each side of neck separately.

Next row: P2tog, K2, P2.

Next row: K2, P3tog.

Next row: P2tog, P1.

Sizes 102-107 and 112-117 cm only

Next row (RS): K2, P2, patt 3 sts, P2tog and turn, leaving rem sts on a holder. 8 sts.

Work each side of neck separately.

Next row: P2tog, P2, K2, P2.

Next row: K2, P2, sl 1, K2tog, pssso.

Next row: K2tog, K1, P2.

Next row: K1, sl 1, K2tog, pssso.

Next row: P2.

Size 122-127 cm only

Next row (RS): K2, P2, patt 3 sts, P2, P2tog and turn, leaving rem sts on a holder. 10 sts.

Work each side of neck separately.

Next row: K2tog, K1, P3, K2, P2.

Next row: K2, P2, K2, sl 1, K2tog, pssso.

Next row: P2tog, P1, K2, P2.

Next row: K2, P1, P3tog.

Next row: K2, P2.

Next row: K1, sl 1, K2tog, pssso.

Next row: P2.

All sizes

Next row (RS): K2tog and fasten off.

With RS facing, slip centre 55 sts onto a holder, rejoin yarn and work 2 tog, patt to end. 6 [6: 8: 8: 10] sts.

Complete to match first side, reversing shapings.

SLEEVES

Using 3¼mm (US 3) needles cast on 51 [55: 57: 57: 59] sts.

Row 1 (RS): P4 [1: 2: 2: 3], K3, *P2, K3, rep from * to last 4 [1: 2: 2: 3] sts, P4 [1: 2: 2: 3].

Row 2: K4 [1: 2: 2: 3], P3, *K2, P3, rep from * to last 4 [1: 2: 2: 3] sts, K4 [1: 2: 2: 3].

Row 3: P4 [1: 2: 2: 3], wrap3, *P2, wrap3, rep from * to last 4 [1: 2: 2: 3] sts, P4 [1: 2: 2: 3].

Row 4: As row 2.

These 4 rows form fancy rib.

Work in fancy rib for a further 12 rows, ending with RS facing for next row.

Change to 4mm (US 6) needles.

Beg with a K row, work in st st throughout as folls:

Inc 1 st at each end of 5th [5th: 5th: 3rd: 3rd] and every foll 6th [6th: 6th: 4th: 4th] row to 63 [75: 89: 61: 75] sts, then on every foll 8th [8th: 8th: 6th: 6th] row until there are 91 [97: 103: 109: 115] sts. Cont straight until sleeve meas 45 [45: 46: 46: 46] cm, ending with RS facing for next row.

Shape raglan

Cast off 3 sts at beg of next 2 rows. 85 [91: 97: 103: 109] sts.

Dec 1 st at each end of next and 3 foll 4th rows, then on every foll alt row until 27 sts rem.

Work 1 row, ending with RS facing for next row.

Break yarn and leave sts on a holder.

MAKING UP

Press as described on the information page.

Join both front and right back raglan seams using back stitch, or mattress stitch if preferred.

Neckband

With RS facing and using 3¼mm (US 3) needles, K across 27 sts on left sleeve holder as folls: K25, sl 1, K1, pssso, pick up and knit 3 [3: 5: 5: 7] sts down left side of front neck, K across 55 sts on front holder dec 2 [2: 3: 3: 3] sts evenly, pick up and knit 3 [3: 5: 5: 7] sts up right side of front neck, then K across 27 sts on right sleeve holder as folls: K2tog, K23, sl 1, K1, pssso, and 65 [65: 67: 67: 69] sts on back holder dec 3 [3: 3: 3: 4] sts evenly. 172 [172: 177: 177: 182] sts.

Row 1 (WS): K2, *P3, K2, rep from * to end.

Row 2: P2, *wrap3, P2, rep from * to end.

Row 3: As row 1.

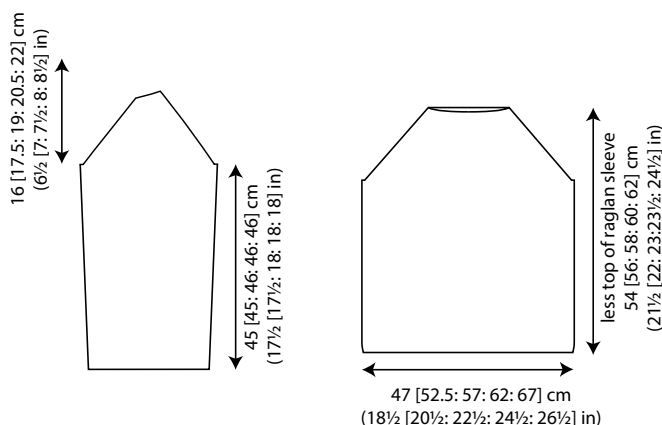
Row 4: P2, *K3, P2, rep from * to end.

These 4 rows form fancy rib.

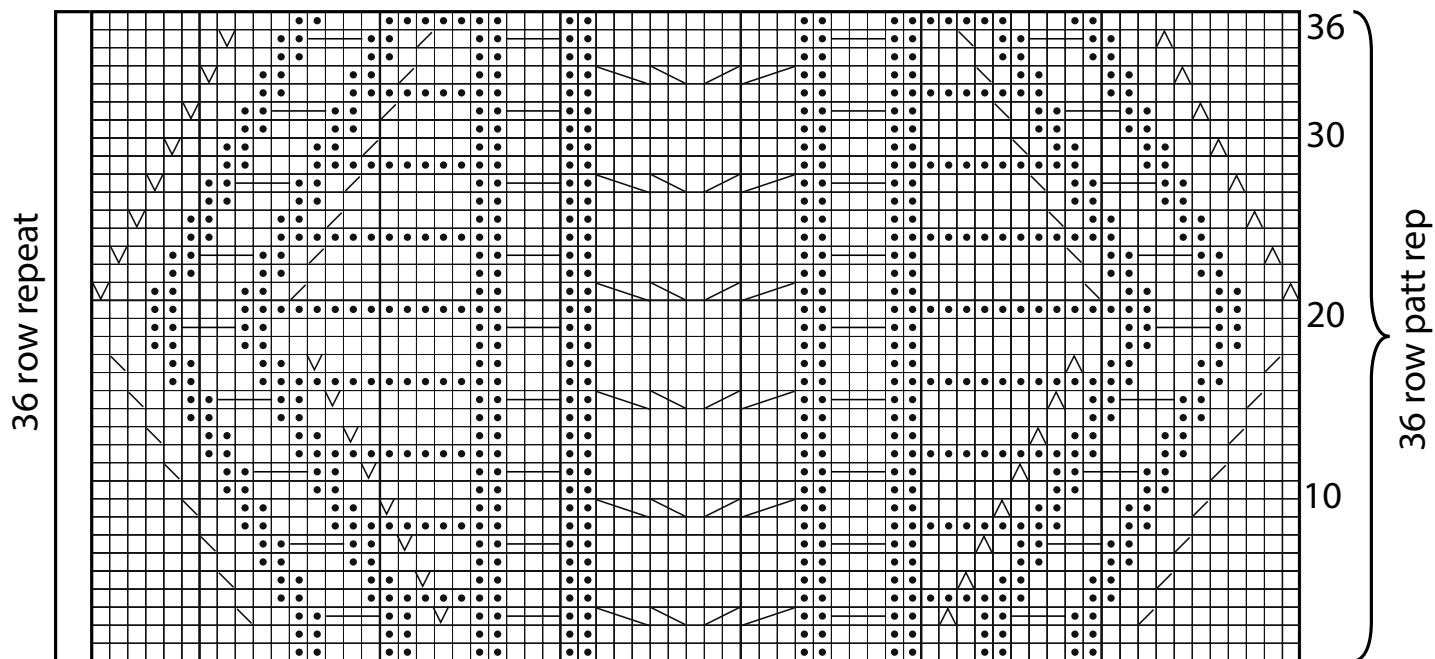
Work in fancy rib for a further 18 rows, ending after row 2 and with **WS** facing for next row.

Cast off in patt (on **WS**).

See information page for finishing instructions.



**Information
Pages**



Key

- K on RS, P on WS
- P on RS, K on WS
- wrap3
- ▧ C5F
- ▨ C5B
- ▤ K2tog
- ▥ sl 1, K1, pss0
- ▴ M1R
- ▾ M1L